

Runa



okamura

Moving Runa

Work, people and products on the move



Simplistic design that embodies the functional needs of a versatile office environment.

“Runa” offers a comprehensive seating collection with a wide variety of colors and finishes.

When you need freedom to think creatively and want those big ideas,

“Runa” gives you the freedom and support to succeed.



Run a **seminar**

Breeze through your seminar in comfort.



Run a **meeting**

To give you that extra stamina needed during a long meeting.



Run a **brainstorm**

Open up your mind with an open space.



Run a **groupwork**
Feel free to speak your mind.

Variations



Basic

562W x 560D x 457SH-837H
(22 1/8"W x 22 1/8"D x 18"SH-33"H)



with Armrest

565W x 560D x 457SH-837H
(22 1/4"W x 22 1/8"D x 18"SH-33"H)



with A3 Tablet

668W x 700D x 457SH-837H
(26 3/8"W x 27 5/8"D x 18"SH-33"H)



with Storage

562W x 560D x 457SH-837H
(22 1/8"W x 22 1/8"D x 18"SH-33"H)



with Armrest & Storage

565W x 560D x 457SH-837H
(22 1/4"W x 22 1/8"D x 18"SH-33"H)



with A3 Tablet & Storage

668W x 700D x 457SH-837H
(26 3/8"W x 27 5/8"D x 18"SH-33"H)

* mm (inch)

Swivel Chair



Basic

475W x 560D x 425~517SH-805~897H
(18 3/4"W x 22 1/8"D x 16 3/4~20 3/8"SH-31 3/4~35 3/8"H)



with Armrest

565W x 560D x 425~517SH-805~897H
(22 1/4"W x 22 1/8"D x 16 3/4~20 3/8"SH-31 3/4~35 3/8"H)



with A4 Tablet

550W x 640D x 425~517SH-805~897H
(21 3/4"W x 25 1/4"D x 16 3/4~20 3/8"SH-31 3/4~35 3/8"H)



with Armrest & A4 Tablet

595W x 640D x 425~517SH-805~897H
(23 1/2"W x 25 1/4"D x 16 3/4~20 3/8"SH-31 3/4~35 3/8"H)



Basic

475W x 560D x 620~774SH-1000~1154H
(18 3/4"W x 22 1/8"D x 24 3/8~30 1/2"SH-39 3/8~45 3/8"H)



with Armrest

565W x 560D x 620~774SH-1000~1154H
(22 1/4"W x 22 1/8"D x 24 3/8~30 1/2"SH-39 3/8~45 3/8"H)

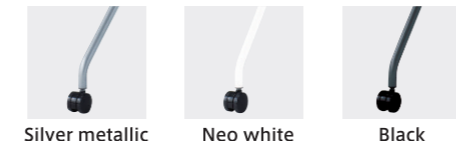
* mm (inch)

Color

Shell

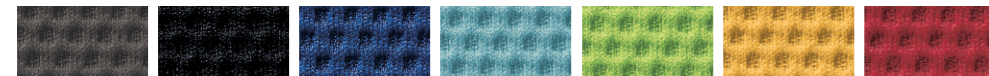


Frame



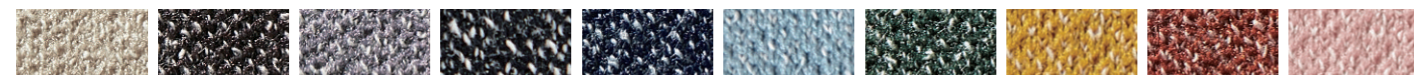
Fabric

3D Knit



Medium gray FSG2, Black FSF1, Medium blue FSF3, Sage FSG7, Lime green FSF5, Yellow FSG9, Red FSF9

Interlock



Beige FXW2, Dark brown FXW3, Gray FXW1, Dark Gray FXW0, Indigo FXW4, Sage FXW9, Dark green FXW5, Yellow FXW7, Terracotta FXW6, Pale pink FXW8

Synthetic leather



Neo black PB20, Sage PD31, Lime green PD32, Yellow PD33

Functions

Comfort Back Shell

The shell's flexible slit structure provides firm support to the lower back while allowing comfortable flex for lateral movements and leaning back.



Comfort Cushion

The flexibility of the fabric and the 3D gradation urethane cushion provides superior comfort.



Comfort



The perforated seat cover and spacer fabric allows for greater breathability.



The flip back design reduces pressure points on the backrest.



For padded comfort, specify the optional backrest pad.

Mobility



You can choose from hard casters or soft casters, with or without brakes for durable mobility.



The high tensile steel frame is robust and light.

Compact (Nesting Chair)



Space efficiency is achieved by nesting pitch of 125mm (5 inch).



Nesting pitch is 150mm (6 inch) with foldaway A3 tablet.

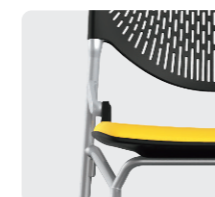


Even with armrest, 3 chairs can be used (as shown) with the standard size 1,800mm (70 7/8 inch) folding table.

Safety (Nesting Chair)



The seat flips down slowly, avoiding unwanted noise and the risk of trapping fingers.



Framework support is set back beneath the seat to reduce risk of trapping fingers.

Safety (High Chair)



The foot ring of the high chair allows for greater stability while sitting and when getting on and off.

Sustainability

Developed and manufactured through an ISO14001 managed operation.



INDOOR ADVANTAGE GOLD FURNITURE

Okamura uses environmentally friendly materials and modular designed parts. Additionally, major resin parts are labeled for easier recycling and disposal. Recycled material used 27%
Recyclability 100%

OKAMURA