

CYNARA

Spec Guide

Issued February 2022

[BIFMA (inch) Standard]



okamura

CYNARA

Color options for Body and Base

Standard color



Black



White



Dark Grey

Accent color



Light Greige



Sage



Dark Green



Orange Red

Armrest types



Fixed Armrest



Without Armrest

Caster types



Normal Caster
(Soft Casters, Hard Casters)



Hollow Caster
(Soft Casters only)

Product Code

CDC □ □ □ - **F** □ □ □

CYNARA

- Armrest
 - 6 : Without Armrest
 - 7 : Fixed Armrest
- Body Color
 - J : Black Body
 - L : White Body
 - M : Dark Gray Body
 - N : Sage Body
 - V : Dark Green Body
 - W : Orange Red Body
 - X : Light Greige Body
- Standard, Caster
 - E : BIFMA Model (Without Brake, Hard Caster), Normal
 - L : BIFMA Model (Without Brake, Soft Caster), Normal
 - K : BIFMA Model (Without Brake, Soft Caster), Hollow
- Mesh Colors

Color Variations (Mesh)



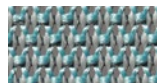
F2X1
Black



F2X2
White



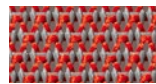
F2X3
Dark Gray



F2X4
Sage



F2X5
Dark Green



F2X6
Orange Red

Both the standard color and accent color have the same body and mesh color. However, the mesh will be white only if the body is light greige.

Performance Flammability : CA TB117-2013-PASS
Abrasion : ASTM D 4157/100,000 Double Rubs (Wyzenbeek method)

Dimensions [BIFMA (inch) Standard]

Armrest Type	Normal Caster	Hollow Caster (Soft Casters only)
Fixed Armrest		
Without Armrest		

OKAMURA

OKAMURA CORPORATION

International Sales & Marketing Div.

www.okamura.com

The products listed in this catalog are available as of February 2022. Please note that specifications, dimensions, and colors are subject to change without notice. The colors of the actual products may differ somewhat from the colors shown in the catalog, depending on printing conditions.