

# Lives Shelf

## Spec Guide

Issued January 2024



# Lives Shelf

Line up



Shelf Unit



Coat hanger Unit

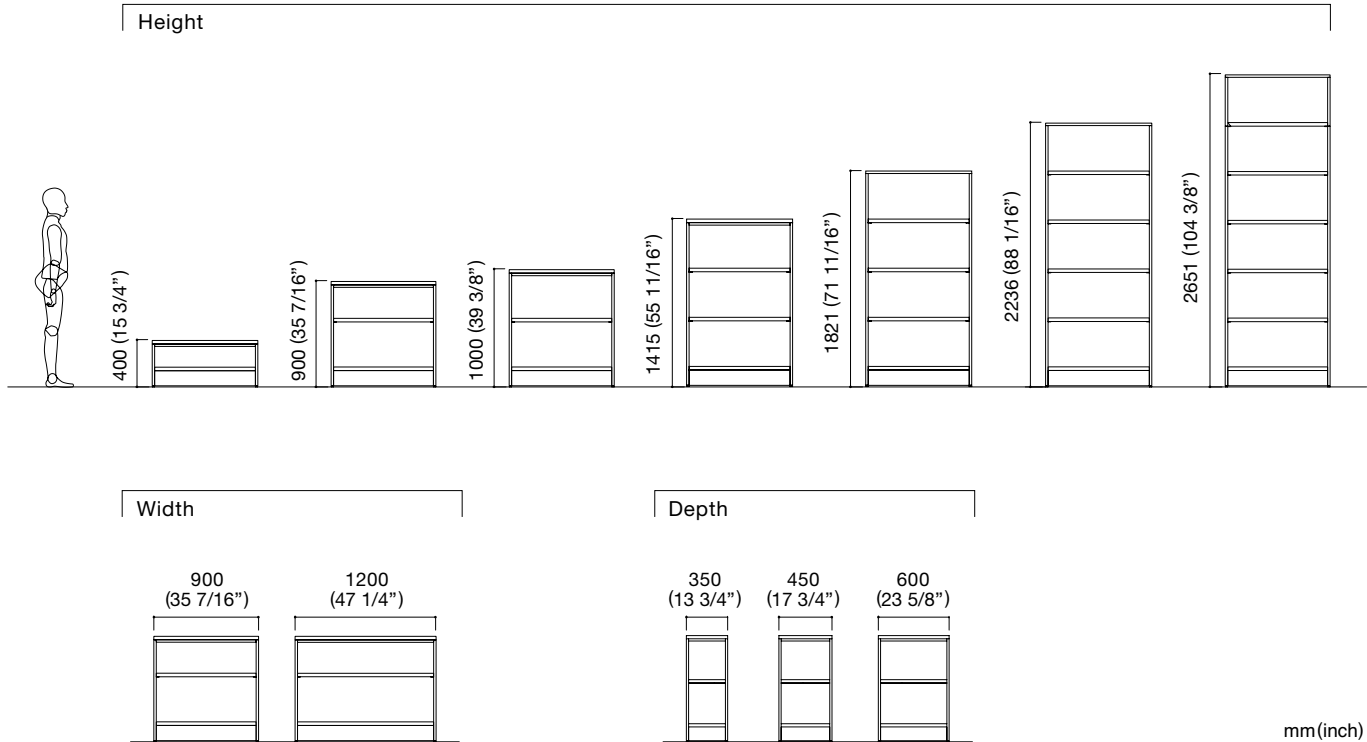


Monitor unit

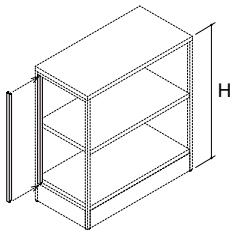
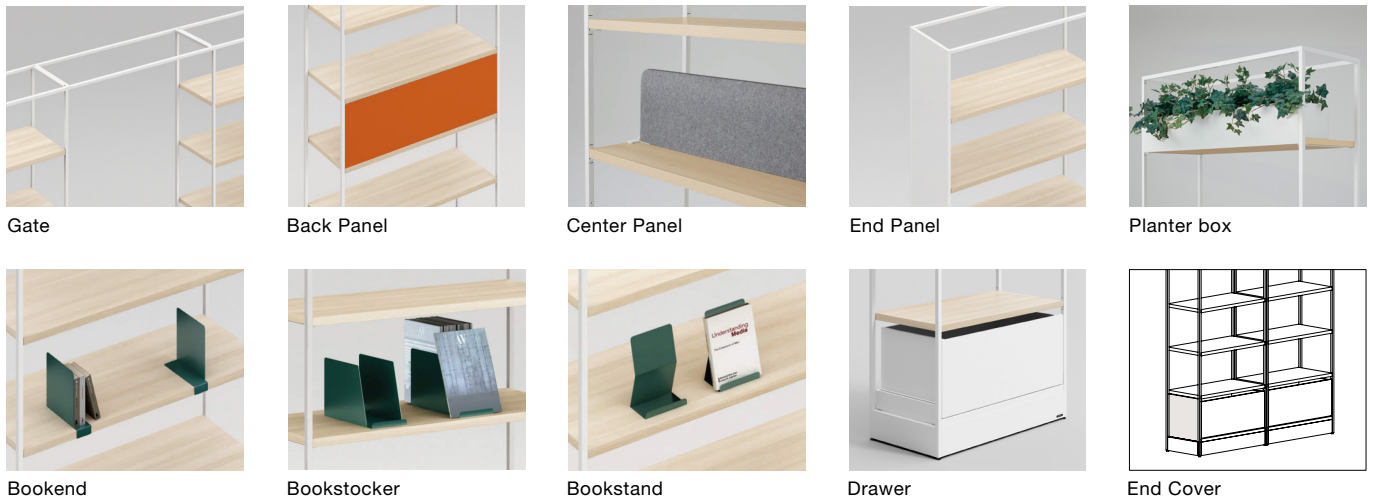


Whiteboard unit

## Shelf Unit Size Variations



# Options



### Wiring Cover

For 900H(35 7/16")

**ML92ECN-Z**□□□

For 1000H(39 3/8")

**ML92EEN-Z**□□□

For 1415H(55 11/16")

**ML92EFN-Z**□□□

For 1821H(71 11/16")

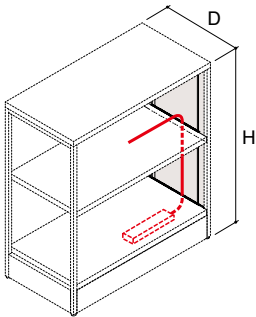
**ML92EGN-Z**□□□

For 2236H(88 1/16")

For 2651H(104 3/8")

**ML92EHN-Z**□□□

# Wiring



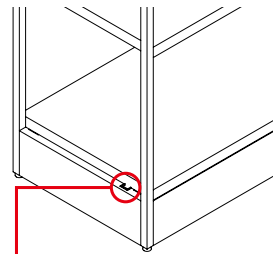
### Conceptual drawing of wiring

The end panel is provided with a clearance at the inner side to allow the cables to pass through. Clearance width: 20 mm (3/4"). Also possible to attach to the connecting part of the frame unit.



### Wiring within baseboard

Since the base board can be removed, the cables can be stored in the base, causing the leg areas to be clear.

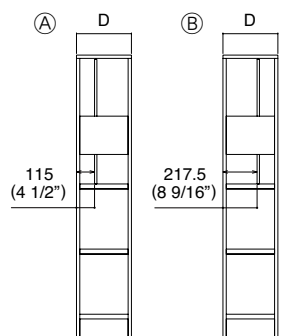


### Wiring hole

The other wiring hole is located at the short side and diagonal position of the unit. 2 wiring holes in the base part. Wiring hole size 17 mm x 10 mm (11/16"x3/8")

# Board unit panel mounting position





Working/reading surface ▶



There are two options for the place to mount the panel on the board unit. Normally, mount the board unit in the position (A) where it can be easily viewed and operated, or in the position (B) when placing it side by side with the monitor unit.

mm(inch)

# Product Code

Product		W	D	H	Product Code
Shelf Unit		900 (35 7/16")	350 (13 3/4")	400 (15 3/4")	<b>ML1AALN</b>
			450 (17 3/4")		<b>ML1BALN</b>
			600 (23 5/8")		<b>ML1CALN</b>
		1200 (47 1/4")	350 (13 3/4")		<b>ML1AAMN</b>
			450 (17 3/4")		<b>ML1BAMN</b>
			600 (23 5/8")		<b>ML1CAMN</b>
		900 (35 7/16")	350 (13 3/4")	900 (35 7/16")	<b>ML1ACLN</b>
			450 (17 3/4")		<b>ML1BCLN</b>
			600 (23 5/8")		<b>ML1CCLN</b>
		1200 (47 1/4")	350 (13 3/4")		<b>ML1ACMN</b>
			450 (17 3/4")		<b>ML1BCMN</b>
			600 (23 5/8")		<b>ML1CCMN</b>
		900 (35 7/16")	350 (13 3/4")	1000 (39 3/8")	<b>ML1AELN</b>
			450 (17 3/4")		<b>ML1BELN</b>
			600 (23 5/8")		<b>ML1CELN</b>
		1200 (47 1/4")	350 (13 3/4")		<b>ML1AEMN</b>
			450 (17 3/4")		<b>ML1BEMN</b>
			600 (23 5/8")		<b>ML1CEMN</b>
		900 (35 7/16")	350 (13 3/4")	1415 (55 11/16")	<b>ML1AFLN</b>
			450 (17 3/4")		<b>ML1BFLN</b>
			600 (23 5/8")		<b>ML1CFLN</b>
		1200 (47 1/4")	350 (13 3/4")		<b>ML1AFMN</b>
			450 (17 3/4")		<b>ML1BFMN</b>
			600 (23 5/8")		<b>ML1CFMN</b>
		900 (35 7/16")	350 (13 3/4")	1821 (71 11/16")	<b>ML1AGLN</b>
			450 (17 3/4")		<b>ML1BGLN</b>
			600 (23 5/8")		<b>ML1CGLN</b>
		1200 (47 1/4")	350 (13 3/4")		<b>ML1AGMN</b>
450 (17 3/4")			<b>ML1BGMN</b>		
600 (23 5/8")			<b>ML1CGMN</b>		
	900 (35 7/16")	350 (13 3/4")	2236 (88 1/16")	<b>ML1AHLN</b>	
		450 (17 3/4")		<b>ML1BHLN</b>	
		600 (23 5/8")		<b>ML1CHLN</b>	
	1200 (47 1/4")	350 (13 3/4")		<b>ML1AHMN</b>	
		450 (17 3/4")		<b>ML1BHMN</b>	
		600 (23 5/8")		<b>ML1CHMN</b>	
	900 (35 7/16")	350 (13 3/4")	2651 (104 3/8")	<b>ML1AJLN</b>	
		450 (17 3/4")		<b>ML1BJLN</b>	
		600 (23 5/8")		<b>ML1CJLN</b>	
	1200 (47 1/4")	350 (13 3/4")		<b>ML1AJMN</b>	
		450 (17 3/4")		<b>ML1BJMN</b>	
		600 (23 5/8")		<b>ML1CJMN</b>	



# Product Code

Product		W	D	H	Product Code
Monitor unit (High Position)		900 (35 7/16")	350 (13 3/4")	1821 (71 11/16")	<b>ML1GGLN</b>
			450 (17 3/4")		<b>ML1HGLN</b>
			600 (23 5/8")		<b>ML1JGLN</b>
		1200 (47 1/4")	350 (13 3/4")		<b>ML1GGMN</b>
			450 (17 3/4")		<b>ML1HGMN</b>
			600 (23 5/8")		<b>ML1JGMN</b>
		900 (35 7/16")	350 (13 3/4")	2236 (88 1/16")	<b>ML1GHLN</b>
			450 (17 3/4")		<b>ML1HHLN</b>
			600 (23 5/8")		<b>ML1JHLN</b>
		1200 (47 1/4")	350 (13 3/4")		<b>ML1GHMN</b>
			450 (17 3/4")		<b>ML1HHMN</b>
			600 (23 5/8")		<b>ML1JHMN</b>
		900 (35 7/16")	350 (13 3/4")	2651 (104 3/8")	<b>ML1GJLN</b>
			450 (17 3/4")		<b>ML1HJLN</b>
			600 (23 5/8")		<b>ML1JJLN</b>
		1200 (47 1/4")	350 (13 3/4")		<b>ML1GJMN</b>
			450 (17 3/4")		<b>ML1HJMN</b>
			600 (23 5/8")		<b>ML1JJMN</b>
Monitor unit (Low Position)		900 (35 7/16")	350 (13 3/4")	1821 (71 11/16")	<b>ML1KGLN</b>
			450 (17 3/4")		<b>ML1LGLN</b>
			600 (23 5/8")		<b>ML1MGLN</b>
		1200 (47 1/4")	350 (13 3/4")		<b>ML1KGMN</b>
			450 (17 3/4")		<b>ML1LGMN</b>
			600 (23 5/8")		<b>ML1MGMN</b>
		900 (35 7/16")	350 (13 3/4")	2236 (88 1/16")	<b>ML1KHLN</b>
			450 (17 3/4")		<b>ML1LHLN</b>
			600 (23 5/8")		<b>ML1MHLN</b>
		1200 (47 1/4")	350 (13 3/4")		<b>ML1KHMN</b>
			450 (17 3/4")		<b>ML1LHMN</b>
			600 (23 5/8")		<b>ML1MHMN</b>
		900 (35 7/16")	350 (13 3/4")	2651 (104 3/8")	<b>ML1KJLN</b>
			450 (17 3/4")		<b>ML1LJLN</b>
			600 (23 5/8")		<b>ML1MJLN</b>
		1200 (47 1/4")	350 (13 3/4")		<b>ML1KJMN</b>
			450 (17 3/4")		<b>ML1LJMN</b>
			600 (23 5/8")		<b>ML1MJMN</b>


mm (inch)


# Product Code

Product		W	D	H	Product Code
Coat hanger Unit		900 (35 7/16")	350 (13 3/4")	1821 (71 11/16")	<b>ML1DGLN</b>
			450 (17 3/4")		<b>ML1EGLN</b>
			600 (23 5/8")		<b>ML1FGLN</b>
		1200 (47 1/4")	350 (13 3/4")		<b>ML1DGMN</b>
			450 (17 3/4")		<b>ML1EGMN</b>
			600 (23 5/8")		<b>ML1FGMN</b>
		900 (35 7/16")	350 (13 3/4")	2236 (88 1/16")	<b>ML1DHLN</b>
			450 (17 3/4")		<b>ML1EHLN</b>
			600 (23 5/8")		<b>ML1FHLN</b>
		1200 (47 1/4")	350 (13 3/4")		<b>ML1DHMN</b>
			450 (17 3/4")		<b>ML1EHMN</b>
			600 (23 5/8")		<b>ML1FHMN</b>
		900 (35 7/16")	350 (13 3/4")	2651 (104 3/8")	<b>ML1DJLN</b>
			450 (17 3/4")		<b>ML1EJLN</b>
			600 (23 5/8")		<b>ML1FJLN</b>
		1200 (47 1/4")	350 (13 3/4")		<b>ML1DJMN</b>
			450 (17 3/4")		<b>ML1EJMN</b>
			600 (23 5/8")		<b>ML1FJMN</b>
Whiteboard unit		900 (35 7/16")	350 (13 3/4")	1821 (71 11/16")	<b>ML1NGLN</b>
			450 (17 3/4")		<b>ML1PGLN</b>
			600 (23 5/8")		<b>ML1RGLN</b>
		1200 (47 1/4")	350 (13 3/4")		<b>ML1NGMN</b>
			450 (17 3/4")		<b>ML1PGMN</b>
			600 (23 5/8")		<b>ML1RGMN</b>
		900 (35 7/16")	350 (13 3/4")	2236 (88 1/16")	<b>ML1NHLN</b>
			450 (17 3/4")		<b>ML1PHLN</b>
			600 (23 5/8")		<b>ML1RHLN</b>
		1200 (47 1/4")	350 (13 3/4")		<b>ML1NHMN</b>
			450 (17 3/4")		<b>ML1PHMN</b>
			600 (23 5/8")		<b>ML1RHMN</b>
		900 (35 7/16")	350 (13 3/4")	2651 (104 3/8")	<b>ML1NJLN</b>
			450 (17 3/4")		<b>ML1PJLN</b>
			600 (23 5/8")		<b>ML1RJLN</b>
		1200 (47 1/4")	350 (13 3/4")		<b>ML1NJMN</b>
			450 (17 3/4")		<b>ML1PJMN</b>
			600 (23 5/8")		<b>ML1RJMN</b>


mm (inch)

## Product Code (Option)

Product		W	D	Product Code
Gate		900 (35 7/16")	350 (13 3/4")	<b>ML4ACEN</b>
		1200 (47 1/4")		<b>ML4ACFN</b>
		1400 (55 1/8")		<b>ML4AAGN</b>
		1500 (59 1/16")		<b>ML4AAHN</b>
		1600 (63")		<b>ML4AAJN</b>
		1800 (70 7/8")		<b>ML4AAKN</b>
		900 (35 7/16")	450 (17 3/4")	<b>ML4BCEN</b>
		1200 (47 1/4")		<b>ML4BCFN</b>
		1400 (55 1/8")		<b>ML4BAGN</b>
		1500 (59 1/16")		<b>ML4BAHN</b>
		1600 (63")		<b>ML4BAJN</b>
		1800 (70 7/8")		<b>ML4BAKN</b>
		900 (35 7/16")	600 (23 5/8")	<b>ML4ACEN</b>
		1200 (47 1/4")		<b>ML4ACFN</b>
		1400 (55 1/8")		<b>ML4AAGN</b>
		1500 (59 1/16")		<b>ML4AAHN</b>
		1600 (63")		<b>ML4AAJN</b>
		1800 (70 7/8")		<b>ML4AAKN</b>


Product		W	H	Product Code
Back Panel	 Fabric (Felt)	900 (35 7/16")	385 (15 3/16")	<b>ML92AEN</b> (FPV□,FLJ□,FO□A,FK□□)
		1200 (47 1/4")		<b>ML92DEN</b> (MJ□0-MJ□3,MJ□4-MJ□7)
				<b>ML92AFN</b> (FPV□,FLJ□,FO□A,FK□□)
				<b>ML92DFN</b> (MJ□0-MJ□3,MJ□4-MJ□7)


The mounting bracket will be exposed on one side. It can be installed on either the front or the back according to the layout.  
For 400H (H15 3/4") is not available.

Product		W	H	Product Code
Center Panel		900 (35 7/16")		<b>ML92BEN</b>
		1200 (47 1/4")		<b>ML92BFN</b>

mm(inch)


## Product Code (Option)

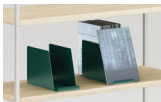
Product		D	H	Product Code
End Panel		350 (13 3/4")	900 (35 7/16")	<b>ML91ACN</b>
		450 (17 3/4")		<b>ML91BCN</b>
		600 (23 5/8")		<b>ML91CCN</b>
		350 (13 3/4")	1000 (39 3/8")	<b>ML91AEN</b>
		450 (17 3/4")		<b>ML91BEN</b>
		600 (23 5/8")		<b>ML91CEN</b>
		350 (13 3/4")	1415 (55 11/16")	<b>ML91AFN</b>
		450 (17 3/4")		<b>ML91BFN</b>
		600 (23 5/8")		<b>ML91CFN</b>
		350 (13 3/4")	1821 (71 11/16")	<b>ML91AGN</b>
		450 (17 3/4")		<b>ML91BGN</b>
		600 (23 5/8")		<b>ML91CGN</b>
		350 (13 3/4")	2236 (88 1/16")	<b>ML91AHN</b>
		450 (17 3/4")		<b>ML91BHN</b>
		600 (23 5/8")		<b>ML91CHN</b>
		350 (13 3/4")	2651 (104 3/8")	<b>ML91AJN</b>
		450 (17 3/4")		<b>ML91BJN</b>
		600 (23 5/8")		<b>ML91CJN</b>


Product		W	D	H	Product Code
Planter box		900 (35 7/16")	223 (8 3/4")	158 (6 1/4")	<b>ML92CEN</b>
		1200 (47 1/4")			<b>ML92CFN</b>

Inner dimensions: 900W(35 7/16") unit: 850Wx190Dx158H (33 7/16"x7 1/2"x6 3/16")  
 1200W(47 1/4") unit: 1150Wx190Dx158H (45 1/4"x7 1/2"x6 3/16")


\* If the product gets wet, there is a risk of product defects such as rust and warped shelves. Therefore, artificial planting is recommended.  
 If you use natural plants that require watering, contact the person in charge. For the 350D frame unit, it cannot be attached to both sides.

Product		W	D	H	Product Code
Bookend		76 (3")	189 (7 7/16")	210 (8 1/4")	<b>ML92DAN</b>

Product		W	D	H	Product Code
Bookstocker		150 (5 15/16")	309 (12 3/16")	210 (8 1/4")	<b>ML92GAN</b>

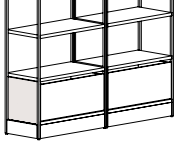
Product		W	D	H	Product Code
Bookstand		150 (5 15/16")	85 (3 3/8")	210 (8 1/4")	<b>ML92FAN</b>

## Product Code (Option)

Product		W	D	H	Product Code
Drawer		900 (35 7/16")	350 (13 3/4")	340 (13 3/8")	<b>ML92HAN</b>
			450 (17 3/4")		<b>ML92HBN</b>
			600 (23 5/8")		<b>ML92HCN</b>
		1200 (47 1/4")	350 (13 3/4")		<b>ML92HDN</b>
			450 (17 3/4")		<b>ML92HEN</b>
			600 (23 5/8")		<b>ML92HFN</b>

### Arrangement Notes

- Can be mounted on the bottom row of frame units 1415H(55 11/16" ) and above
- Cannot be attached to shelf unit 400H or coat hanger unit.
- Be sure to install end covers on both sides.
- When installing in a location other than in front of a wall, be sure to install a back panel.
- In the case of 450D and 600D, there is some leftover pull

Product		D	Product Code
End Cover ( left/right set)		350 (13 3/4")	<b>ML59AYN</b>
		450 (17 3/4")	<b>ML59BYN</b>
		600 (23 5/8")	<b>ML59CYN</b>

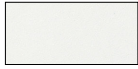
mm (inch)

# Color Variations

## Frame / Gatel / End Panel / Planter box / Bookend / Bookstand / Drawer / Wiring Cover

ZA75

Satin Finish ZK25, ZH1□



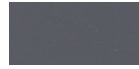
**ZA75**  
Neo White



**ZK25**  
Black



**ZH17**  
Light Greige



**ZH15**  
Dark Gray



**ZH14**  
Sage



**ZH12**  
Dark Green



**ZH13**  
Yellow



**ZH11**  
Orange Red

## Shelf

### High-Pressure Laminate



**MDS4**  
White  
(MG07+GG78)



**MDS5**  
Black  
(MK74+GG78)  
Anti-fingerprint\*\*



**MX61**  
Prize wood light  
(MX51+GE21)  
Anti-fingerprint\*\*



**MX60**  
Prize wood natural  
(MX50+GE50)  
Anti-fingerprint\*\*



**MX62**  
Prize wood medium  
(MX52+GE22)  
Anti-fingerprint\*\*



**MX63**  
Prize wood dark  
(MX53+GE23)  
Anti-fingerprint\*\*



Shelftop  
Edge

\*\*Anti-fingerprint laminate surface provides resistance to fingerprints and is easily wiped clean.



**MEP4**  
Vintage elm  
(MN74+GG74)



**MEP1**  
Chalked elm  
(MN71+GG71)



**MEP2**  
Sawn oak  
(MN72+GG72)



**MEP3**  
Rustic pine  
(MN73+GG73)

## Combination specifications MF□□ MJ□□ MH□3 ~ 5, MU0□ MH□6 ~ 9, MGM□

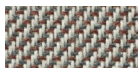
	Frame							
	ZA75 (Neo White)	ZK25 (Black)	ZH17 (Light Greige)	ZH15 (Dark Gray)	ZH14 (Sage)	ZH12 (Dark Green)	ZH13 (Yellow)	ZH11 (Orange Red)
Shelf	Combination Code							
MDS4 (White)	MFV1	MJV1	MFV8	MFV7	MFV6	MFV4	MFV5	MFV3
MDS5 (Black)	MFV1	MJV1	MFV8	MFV7	MFV6	MFV4	MFV5	MFV3
MX61 (Prize wood light)	MU03	MHV3	MJP3	MHK3	MHJ3	MHG3	MHH3	MHF3
MX60 (Prize wood natural)	MU07	MHV0	MJP0	MHK0	MHJ0	MHG0	MHH0	MHF0
MX62 (Prize wood medium)	MU04	MHV4	MJP4	MHK4	MHJ4	MHG4	MHH4	MHF4
MX63 (Prize wood dark)	MU05	MHV5	MJP5	MHK5	MHJ5	MHG5	MHH5	MHF5
MEP4 (Vintage elm)	MGM4	MHV9	MJR9	MHK9	MHJ9	MHG9	MHH9	MHF9
MEP1 (Chalked elm)	MGM1	MHV6	MJR6	MHK6	MHJ6	MHG6	MHH6	MHF6
MEP2 (Sawn oak)	MGM2	MHV7	MJR7	MHK7	MHJ7	MHG7	MHH7	MHF7
MEP3 (Rustic pine)	MGM3	MHV8	MJR8	MHK8	MHJ8	MHG8	MHH8	MHF8

MDS5/MX61/MX60/MX62/MX63 Anti-fingerprint\*\*

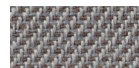
\*\*Anti-fingerprint laminate surface provides resistance to fingerprints and is easily wiped clean.

## Back Panel / Center Panel

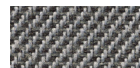
### Twill



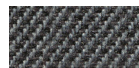
**FKY7**  
Beige



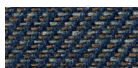
**FKY3**  
Light Gray



**FKY2**  
Gray



**FKY1**  
Dark Gray



**FKY4**  
Dark Blue



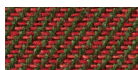
**FKY6**  
Sage



**FKY5**  
Dark Green



**FKY9**  
Yellow Green



**FKY8**  
Terracotta



**FKZ7**  
Pale Pink

## Combination specifications F5□A, F8□A

	Bracket	
	ZA75 (Neo White)	ZK25 (Black)
Panel	Combination Code	
FKY7 (Beige)	F57A	F87A
FKY3 (Light Gray)	F53A	F83A
FKY2 (Gray)	F52A	F82A
FKY1 (Dark Gray)	F51A	F81A
FKY4 (Dark Blue)	F54A	F84A
FKY6 (Sage)	F56A	F86A
FKY5 (Dark Green)	F55A	F85A
FKY9 (Yellow Green)	F59A	F89A
FKY8 (Terracotta)	F58A	F88A
FKZ7 (Pale Pink)	F50A	F80A

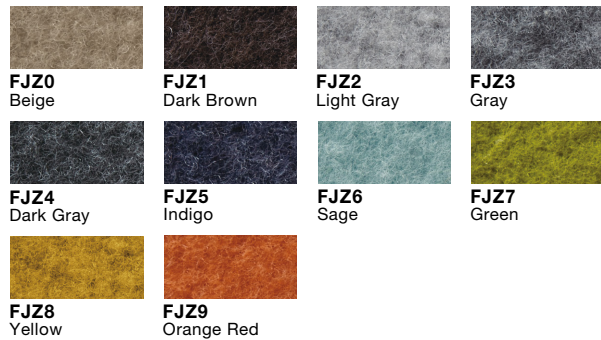
# Color Variations

## Back Panel / Center Panel

### Interlock

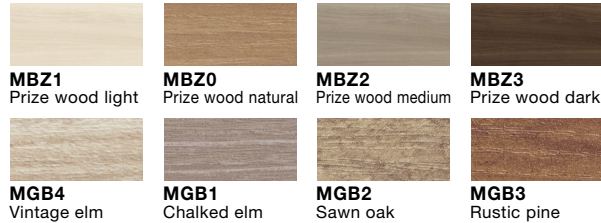


### Felt








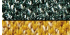
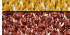





## Back Panel




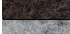



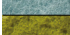




### Wood










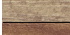
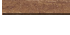

## Combination specifications FKF□, F2E□

		Bracket	
		 ZA75 (Neo White)	 ZK25 (Black)
Panel		Combination Code	
	FXT2 (Beige)	<b>FKF2</b>	<b>F2E2</b>
	FXT3 (Dark Brown)	<b>FKF3</b>	<b>F2E3</b>
	FXT1 (Gray)	<b>FKF1</b>	<b>F2E1</b>
	FXT0 (Dark Gray)	<b>FKF0</b>	<b>F2E0</b>
	FXT4 (Indigo)	<b>FKF4</b>	<b>F2E4</b>
	FXT9 (Sage)	<b>FKF9</b>	<b>F2E9</b>
	FXT5 (Dark Green)	<b>FKF5</b>	<b>F2E5</b>
	FXT7 (Yellow)	<b>FKF7</b>	<b>F2E7</b>
	FXT6 (Terracotta)	<b>FKF6</b>	<b>F2E6</b>
	FXT8 (Pale Pink)	<b>FKF8</b>	<b>F2E8</b>

## Combination specifications FLJ□, FPV□

		Bracket	
		 ZA75 (Neo White)	 ZK25 (Black)
Panel		Combination Code	
	FJZ0 (Beige)	<b>FLJ0</b>	<b>FPV0</b>
	FJZ1 (Dark Brown)	<b>FLJ1</b>	<b>FPV1</b>
	FJZ2 (Light Gray)	<b>FLJ2</b>	<b>FPV2</b>
	FJZ3 (Gray)	<b>FLJ3</b>	<b>FPV3</b>
	FJZ4 (Dark Gray)	<b>FLJ4</b>	<b>FPV4</b>
	FJZ5 (Indigo)	<b>FLJ5</b>	<b>FPV5</b>
	FJZ6 (Sage)	<b>FLJ6</b>	<b>FPV6</b>
	FJZ7 (Green)	<b>FLJ7</b>	<b>FPV7</b>
	FJZ8 (Yellow)	<b>FLJ8</b>	<b>FPV8</b>
	FJZ9 (Orange Red)	<b>FLJ9</b>	<b>FPV9</b>

## Combination specifications MJY□, MJZ□

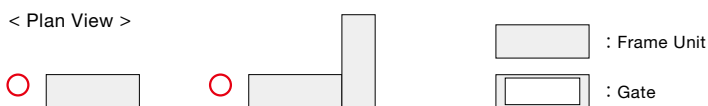
		Bracket	
		 ZA75 (Neo White)	 ZK25 (Black)
Panel		Combination Code	
	MBZ1 (Prize wood light)	<b>MJY1</b>	<b>MJZ1</b>
	MBZ0 (Prize wood natural)	<b>MJY0</b>	<b>MJZ0</b>
	MBZ2 (Prize wood medium)	<b>MJY2</b>	<b>MJZ2</b>
	MBZ3 (Prize wood dark)	<b>MJY3</b>	<b>MJZ3</b>
	MGB4 (Vintage elm)	<b>MJY7</b>	<b>MJZ7</b>
	MGB1 (Chalked elm)	<b>MJY4</b>	<b>MJZ4</b>
	MGB2 (Sawn oak)	<b>MJY5</b>	<b>MJZ5</b>
	MGB3 (Rustic pine)	<b>MJY6</b>	<b>MJZ6</b>

# Installation Requirements

## ■ Low type [1000H(39 3/8") or lower]

- The units can be installed as a single unit excluding those of 1000H×350D(39 3/8"×13 3/4").
- When arranging the units of 1000H×350D(39 3/8"×13 3/4"), attach them to the floor or use a layout of L-shaped connection.

< Plan View >

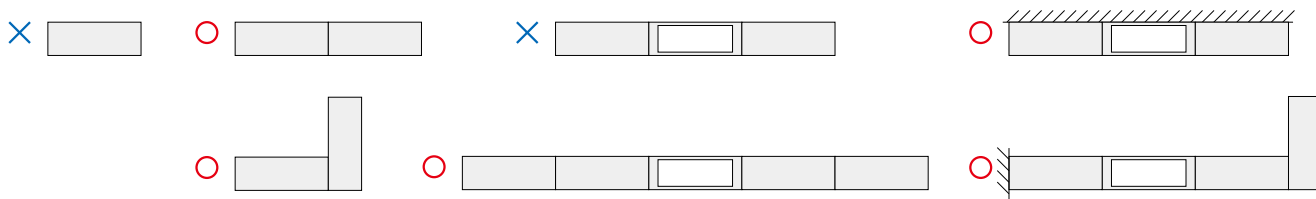


\* Except for the units of 1000H×350D(39 3/8"×13 3/4").

## ■ High type [1415H(55 11/16")]

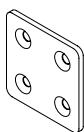
- Make sure to attach all units to the floor or wall.
- Since the connection by use of a gate is auxiliary measures, be sure to connect the units themselves together.
- Any horizontal connection brackets are not included. Separately procure them according to the layout. (See the following)
- Please use by connecting two or more units of 1000H(39 3/8") or higher.
- If you use a layout with only one unit, attach the unit to the wall.
- Conditions remain the same when two or more units of different heights are connected.

< Plan View >



# Attaching to the floor/wall

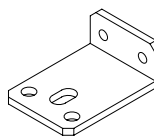
Floor attaching brackets are supplied with the product. Separately prepare anchor bolts and self-tapping anchors according to the floor type. Implement wall attachment only to the building frame. The product cannot be attached to a partition or a built-in wall. Since the shelf body will shake in case of an earthquake, it cannot be arranged in front of windows or glass partitions.



Horizontal connection bracket Set  
 For 900H(35 7/16"), 1000H(39 3/8"), 1415H(55 11/16")  
**ML93ZAN-Z**□□□  
 For 1821H(71 11/16"), 2236H(88 1/16")  
**ML93ZBN-Z**□□□  
 For 2651H(104 3/8")  
**ML93ZCN-Z**□□□  
 For 2236H(88 1/16"), 2651H(104 3/8") For step connection  
**ML93ZDN-Z**□□□

Required number of sets: No. of connected units - 1 For 400H type, it is not necessary to procure a set of horizontal connecting brackets.

**Caution**  
 When connecting steps of other heights, please arrange a set of hardware for the lower of the two units.



Wall fixing bracket  
 223W×158D (8 3/4"×6 3/16")  
**ML93YAN-ZA75,ZK25**

1 piece included. Can be attached to two locations per frame unit. Any screws for attaching to the wall are not included. Separately procure them according to the type of wall surface.

# Precautions for procurement

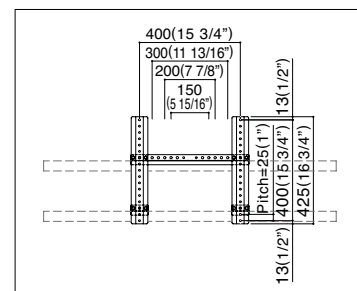
## Lives Shelf max. loading mass

\* The maximum loading mass is as shown in the table. Do not exceed the values listed in the table. Store items so that they are equally distributed, and store from the bottom up. When a sofa or the like is built in the gate, loads may fall off. Be sure to use a book stand or end panel to prevent them from falling.

Name	Maximum loading capacity
Shelf	30kg

## Precautions for procuring the monitor unit

Please procure the monitor and its mounting screws by yourself. Please check the instruction manual of the monitor in advance for the possibility of mounting and the necessary screws.



**[Mounting pitch]**  
 Horizontal: 150/200/300/400  
 (5 15/16"-7 7/8"-11 13/16"-15 3/4")  
 Vertical: 100/150/200/300/400  
 (3 15/16"-5 15/16"-7 7/8"-11 13/16"-15 3/4")

## Compatible monitor

- The mounting pitch should be correct (see the figure on the right).
- The back of the monitor should be flat without any protrusions.

## Compatible size

- < 1200W(47 1/4") monitor unit >
  - 50-inch 40 kg or less
  - External dimension 1155W×795H×100D(45 7/16"×31 5/16"×3 15/16") or less
- < 900W(35 7/16") monitor unit >
  - 32-inch 40 kg or less
  - External dimension 858W×795D×100D(33 3/4"×31 5/16"×3 15/16") or less



# Dimensions

## Shelf Unit

400H (15 3/4")		900H (35 7/16")		1000H (39 3/8")		1415H (55 11/16")	
W	D	W	D	W	D	W	D
900 (35 7/16")	350 (13 3/4")	900 (35 7/16")	350 (13 3/4")	900 (35 7/16")	350 (13 3/4")	900 (35 7/16")	350 (13 3/4")
	450 (17 3/4")		450 (17 3/4")		450 (17 3/4")		450 (17 3/4")
	600 (23 5/8")		600 (23 5/8")		600 (23 5/8")		600 (23 5/8")
1200 (47 1/4")	350 (13 3/4")	1200 (47 1/4")	350 (13 3/4")	1200 (47 1/4")	350 (13 3/4")	1200 (47 1/4")	350 (13 3/4")
	450 (17 3/4")		450 (17 3/4")		450 (17 3/4")		450 (17 3/4")
	600 (23 5/8")		600 (23 5/8")		600 (23 5/8")		600 (23 5/8")

1821H (71 11/16")		2236H (88 1/16")		2651H (104 3/8")	
W	D	W	D	W	D
900 (35 7/16")	350 (13 3/4")	900 (35 7/16")	350 (13 3/4")	900 (35 7/16")	350 (13 3/4")
	450 (17 3/4")		450 (17 3/4")		450 (17 3/4")
	600 (23 5/8")		600 (23 5/8")		600 (23 5/8")
1200 (47 1/4")	350 (13 3/4")	1200 (47 1/4")	350 (13 3/4")	1200 (47 1/4")	350 (13 3/4")
	450 (17 3/4")		450 (17 3/4")		450 (17 3/4")
	600 (23 5/8")		600 (23 5/8")		600 (23 5/8")

## Coat hanger Unit

1821H (71 11/16")		2236H (88 1/16")		2651H (104 3/8")	
W	D	W	D	W	D
900 (35 7/16")	350 (13 3/4")	900 (35 7/16")	350 (13 3/4")	900 (35 7/16")	350 (13 3/4")
	450 (17 3/4")		450 (17 3/4")		450 (17 3/4")
	600 (23 5/8")		600 (23 5/8")		600 (23 5/8")
1200 (47 1/4")	350 (13 3/4")	1200 (47 1/4")	350 (13 3/4")	1200 (47 1/4")	350 (13 3/4")
	450 (17 3/4")		450 (17 3/4")		450 (17 3/4")
	600 (23 5/8")		600 (23 5/8")		600 (23 5/8")

# Dimensions

## Monitor unit (High Position)

1821H (71 11/16")		2236H (88 1/16")		2651H (104 3/8")	
W	D	W	D	W	D
900 (35 7/16")	350 (13 3/4")	900 (35 7/16")	350 (13 3/4")	900 (35 7/16")	350 (13 3/4")
	450 (17 3/4")		450 (17 3/4")		450 (17 3/4")
	600 (23 5/8")		600 (23 5/8")		600 (23 5/8")
1200 (47 1/4")	350 (13 3/4")	1200 (47 1/4")	350 (13 3/4")	1200 (47 1/4")	350 (13 3/4")
	450 (17 3/4")		450 (17 3/4")		450 (17 3/4")
	600 (23 5/8")		600 (23 5/8")		600 (23 5/8")

## Monitor unit (Low Position)

1821H (71 11/16")		2236H (88 1/16")		2651H (104 3/8")	
W	D	W	D	W	D
900 (35 7/16")	350 (13 3/4")	900 (35 7/16")	350 (13 3/4")	900 (35 7/16")	350 (13 3/4")
	450 (17 3/4")		450 (17 3/4")		450 (17 3/4")
	600 (23 5/8")		600 (23 5/8")		600 (23 5/8")
1200 (47 1/4")	350 (13 3/4")	1200 (47 1/4")	350 (13 3/4")	1200 (47 1/4")	350 (13 3/4")
	450 (17 3/4")		450 (17 3/4")		450 (17 3/4")
	600 (23 5/8")		600 (23 5/8")		600 (23 5/8")

## Whiteboard unit

1821H (71 11/16")		2236H (88 1/16")		2651H (104 3/8")	
W	D	W	D	W	D
900 (35 7/16")	350 (13 3/4")	900 (35 7/16")	350 (13 3/4")	900 (35 7/16")	350 (13 3/4")
	450 (17 3/4")		450 (17 3/4")		450 (17 3/4")
	600 (23 5/8")		600 (23 5/8")		600 (23 5/8")
1200 (47 1/4")	350 (13 3/4")	1200 (47 1/4")	350 (13 3/4")	1200 (47 1/4")	350 (13 3/4")
	450 (17 3/4")		450 (17 3/4")		450 (17 3/4")
	600 (23 5/8")		600 (23 5/8")		600 (23 5/8")

mm (inch)

# OKAMURA

**OKAMURA CORPORATION**

International Sales & Marketing Div.

www.okamura.com

The products listed in this catalog are available as of January 2024. Please note that specifications, dimensions, and colors are subject to change without notice. The colors of the actual products may differ somewhat from the colors shown in the catalog, depending on printing conditions.