

traverse

Engineered simplicity.



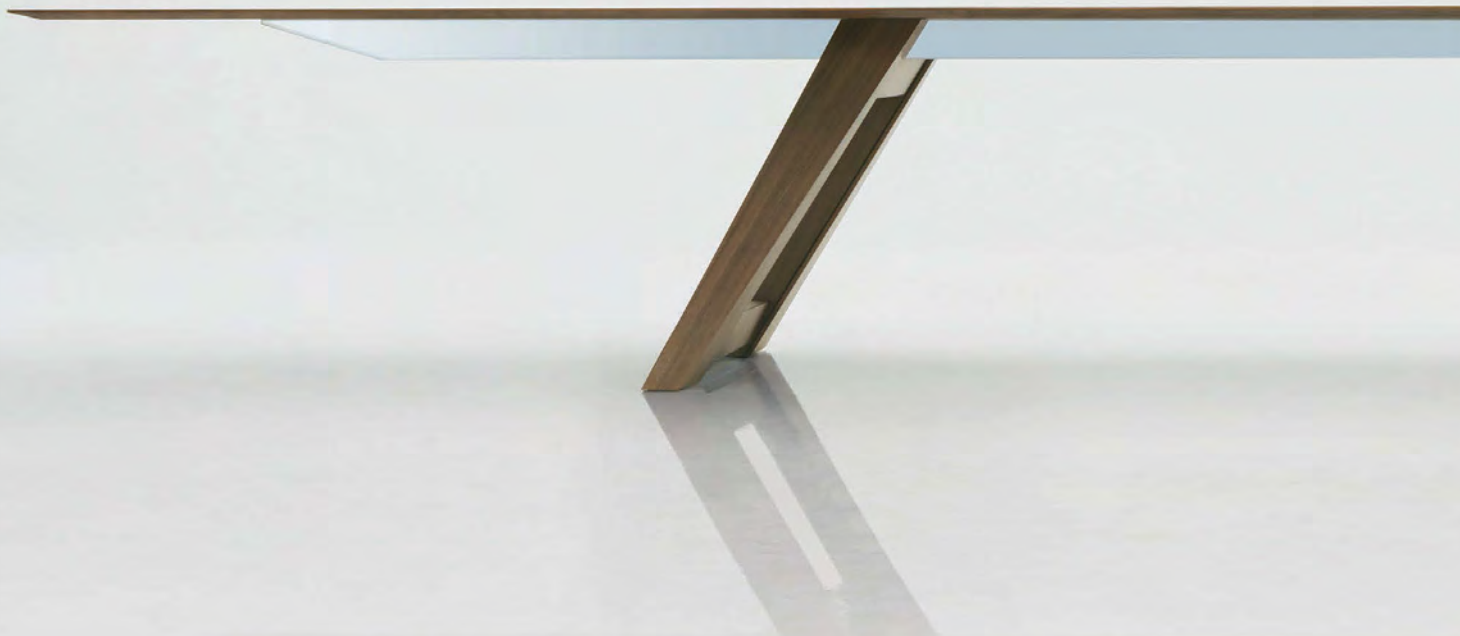
okamura

Impossibly thin. Beautifully strong.

In today's workplace, conference rooms are challenged with shrinking size as well as the need to adapt to evolving technologies. Traverse is a conference table defined by narrow contours that broaden office space, bringing people together beautifully.

Traverse was meticulously designed to create a profound presence. Despite its exquisitely simple design, the table places a premium on functionality through concealed technology and strong support.

Okamura's legacy of structural engineering, passion for creative materials, and signature craftsmanship unite in Traverse—recreating the conference table through engineered simplicity.





contract



GOOD
DESIGN



INDOOR ADVANTAGE GOLD
FURNITURE





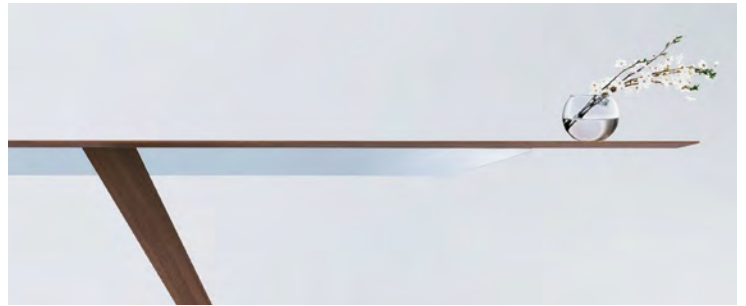
The minimal silhouette of Traverse is achieved through a simple, canted leg design mirrored on either side of the table.



Elegant Tabletop

The table top is incredibly thin, less than 1" at its thickest point and tapering to a knife edge. With a span of up to 20 feet long, the top creates the effect of a floating plane, in a rectangle, boat or oval shape. The support structure is also remarkably minimal—yet structurally strong enough for the top to extend well past the legs.

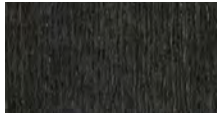
■ Knife



Exquisite Finishes

Traverse is offered in six beautiful, high quality finishes of wood veneers. Transitions between sections of the tabletop are seamless, creating a single, uninterrupted, beautiful span.

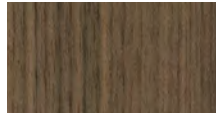
■ Wood veneer



WE51 | Dyed Oak



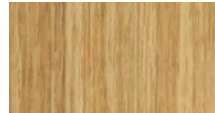
WE52 | Dark Sapele



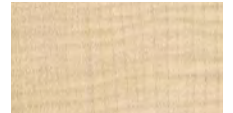
WE53 | Walnut



WE54 | Teak



WE55 | Oak



WE56 | Figured Maple

Integrated Technology

Integrated technology is concealed within each design, allowing for future flexibility. As technology tools advance toward wireless offices, Traverse locates power and data in its Tech Cradle—a small connective box discreetly tucked under the tabletop. Cables are hidden inside the legs, ensuring a polished look and more usable space.



Power charger / HDMI / VGA / AUDIO / USB / RJ11 / RJ45

The photograph is a North American specification.



Shapes & Dimensions



Rectangle



Boat



Oval

D	W			
	2400	3600	4800	5600
1200	●	●	●	●
1500		●	●	●

(mm)

Design Studio

Traverse is designed by Rainlight. Rainlight is an integrated studio located in London and Los Angeles with client collaborations across North America, Europe, and Asia. More than a design practice, Rainlight discovers the needs of a changing world through cross-cultural research within their own network of experts in various market sectors. Part Laboratory, part workshop, part studio, Rainlight combines inspired design thinking with business acumen to create artefacts that enhance how people live, work, and play in the real world.

rainlightstudio.com

OKamura

OKAMURA CORPORATION

International Sales & Marketing Div.

www.okamura.com

The products listed in this catalog are available as of March 2023. Please note that specifications, dimensions, and colors are subject to change without notice. The colors of the actual products may differ somewhat from the colors shown in the catalog, depending on printing conditions.

YKCO28-331 P.TG '23-03 Printed in Japan